



1tool version 2.5 service pack 1 - Release notes

PLEASE READ CAREFULLY BEFORE INSTALLATION

IMPORTANT: this upgrade can be applied only to 1tool v.2.5.16

Major enhancements

- **Added support to new pCO5+**
 - Some details about the device's the new features are described below
 - Please refer to the manual of the pCO5+ for other characteristics
 - +0300020IT pCO5PLUS ITA REL. 1.0
 - +0300020EN pCO5PLUS ENG REL. 1.0
- **Enhanced integration with 1tool Touch editor** (see dedicated section in this document)
- **Enhanced crash reporting system** (see dedicated section in this document)

New features of pCO5+

- **Configurable I/O**

According to the size of the controller there are some Universal I/Os available. Nothing changes in the management of this type of I/O: you can use the well-known atoms AIN_CONF, AOUT_CONF, DIN and the new atoms DIN_COUNT and DIN_FREQ.

The configurable I/O is backward compatible, so you don't need to change anything in your current application.

To benefit of the configurability keep in mind a simple rule: add 1000 to the channel number you want to use.

Two simple examples to clarify the usage.

If you want to use the U2 as a digital input, use the code in Fig.1

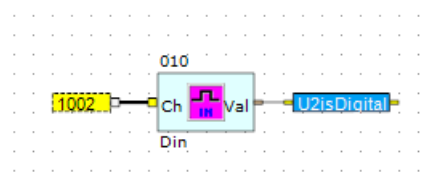


Fig. 1

If you want to read the frequency of the signal at U3, simply use the code in Fig.2

For support and further information contact *1tool Customer Care* (1tool@carel.com)



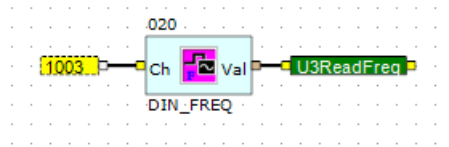


Fig. 2

The method is the same for the other atoms' type.

Important: In the simulator the new way of configuring the I/O (by adding 1000 to the address) can't be mixed-up with the old one.

o **Simulator's scenarios for pCO5+**

This section describes how to set the configurable I/O in the 1tool simulator in order to perform the simulation of an application developed for pCO5+.

Scenario 1

This scenario describes how to set configurable I/O in the automatic way.

1. Develop the I/O policy

User drags in the strategy page some I/O atoms and sets them to the correct I/O setting. In Fig.1 there is an example.

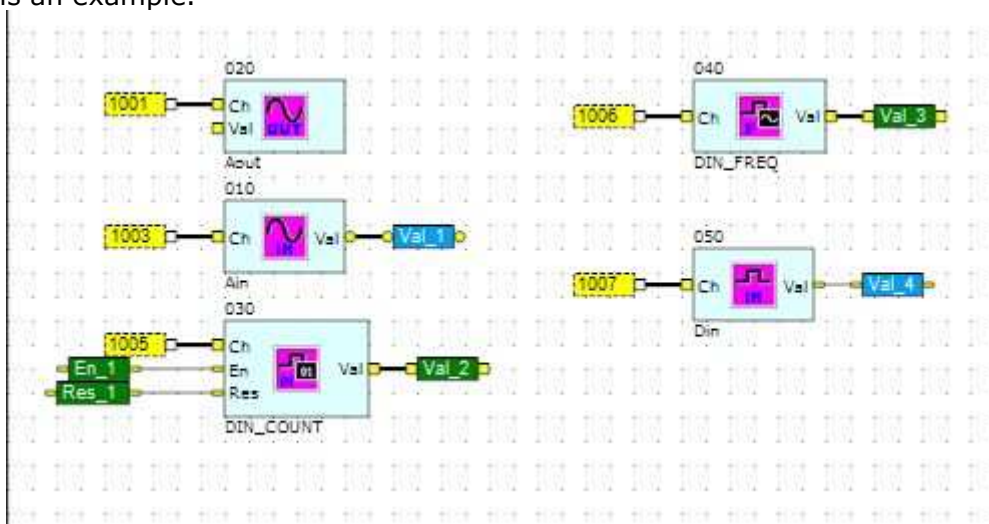


Fig. 3

In Fig.3 there are some atoms used to set the application I/O.

2. Start the simulation

For support and further information contact 1tool Customer Care (1tool@carel.com)



User compiles the application and starts the simulator. 1tool displays a form where the user can set the I/O configuration. In Fig. 4 it's shown this form. Now, the user has two ways to set the I/O for his application. This scenario describes the automatic way.

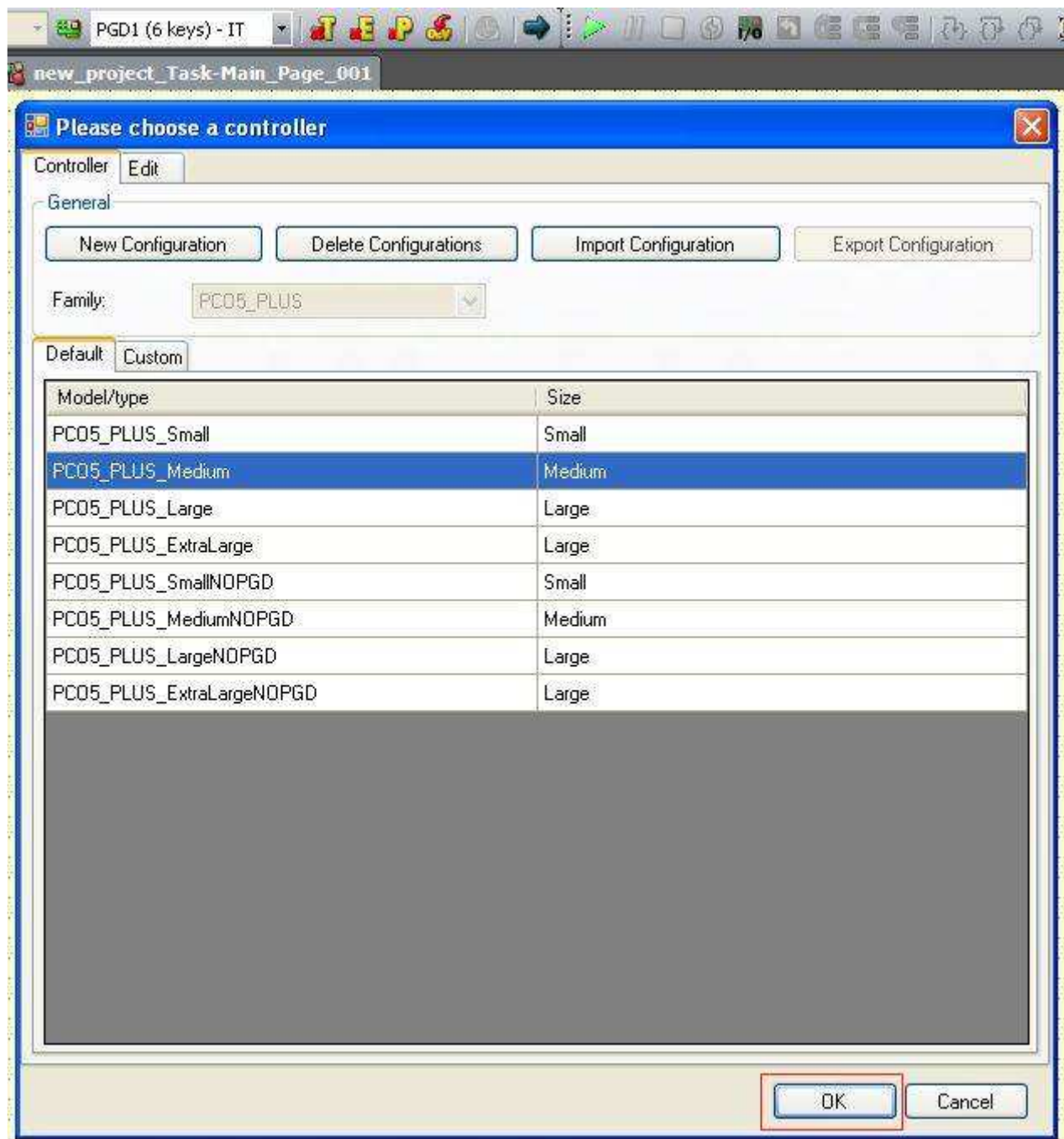


Fig. 4

User presses OK and starts the simulation by clicking the Play button.

For support and further information contact 1tool Customer Care (1tool@carel.com)





3. Test the I/O configuration

1tool starts the simulation and it recognizes the I/O configuration made by the user. User has to click the red-boxed I/O button in Fig. 5 and he can see the differences between the simulator settings – in which all the channels are set to the default value AIN - and the real application settings. A useful help is given by the red highlighting over the mis-matching rows. By clicking the Save button the user can save in an xml file the real configuration of the application.

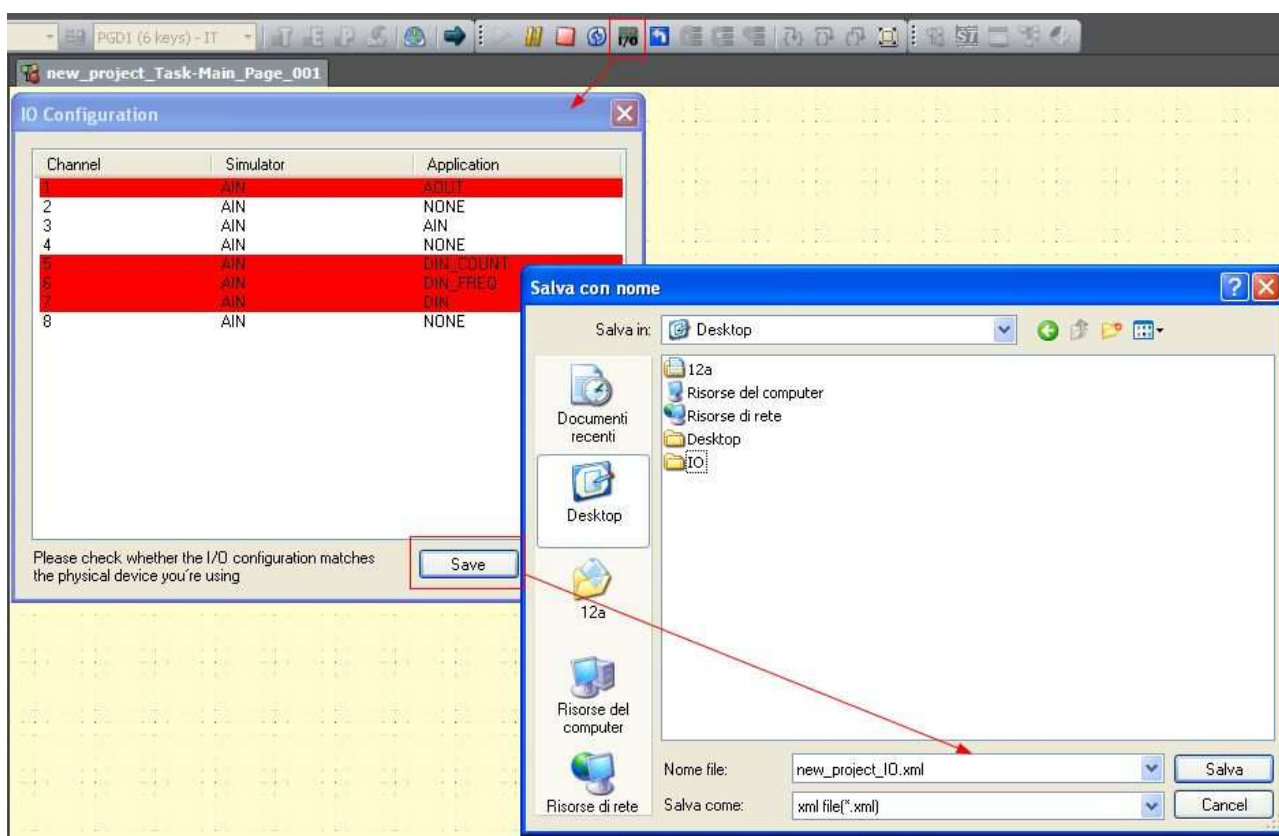


Fig. 5

4. Import the configuration and check the correctness

Now the user has to stop the simulation and by clicking the "Hardware controller management" button red-boxed in Fig.6 he can import the configuration just exported.

For support and further information contact *1tool Customer Care* (1tool@carel.com)



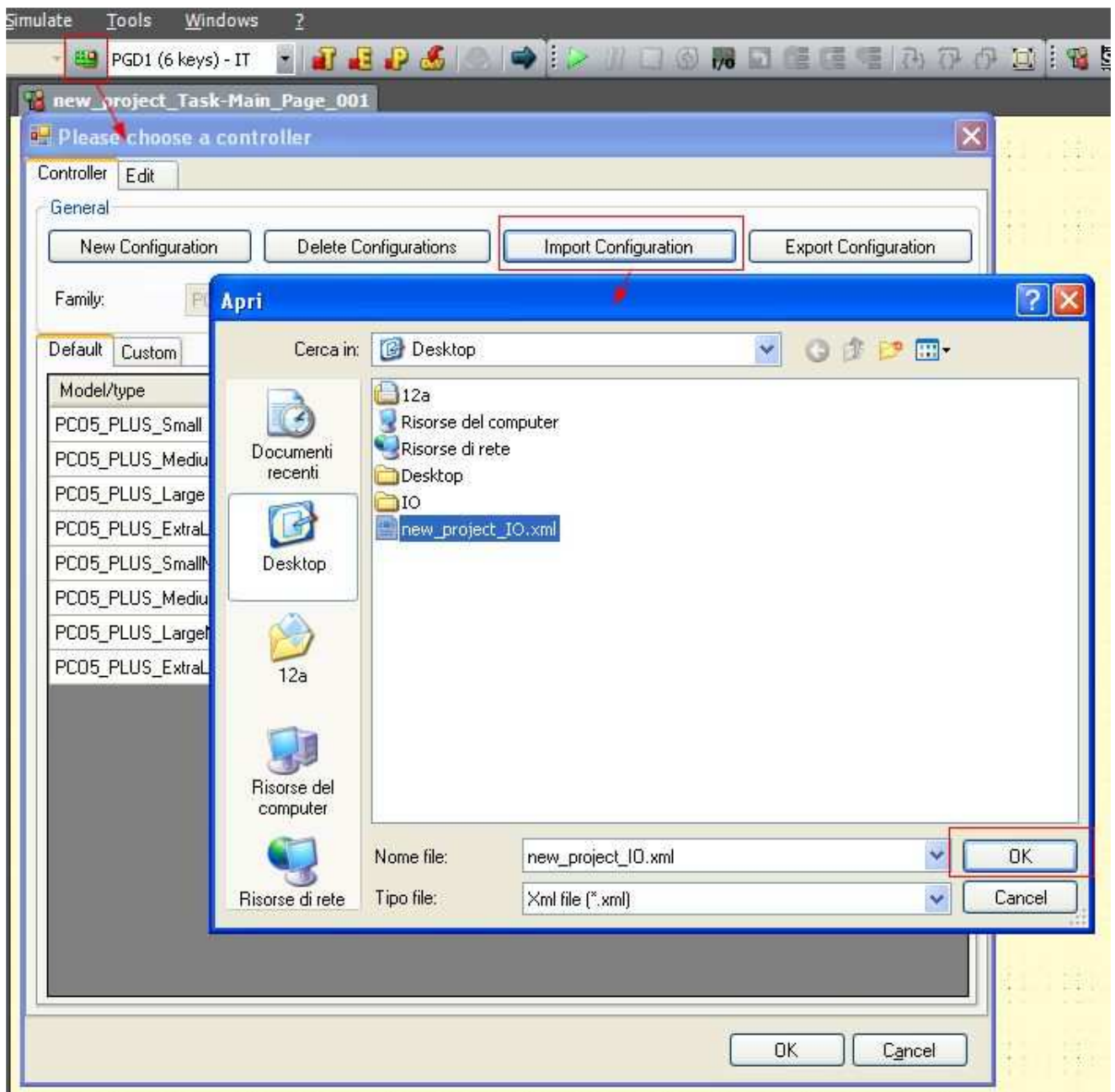


Fig. 6

After that, the user can test the I/O settings by clicking the Custom tab, and after that - by clicking the Edit tab - he can view all the settings. Fig. 7 and Fig. 8 show these forms.

For support and further information contact *1tool Customer Care* (1tool@carel.com)

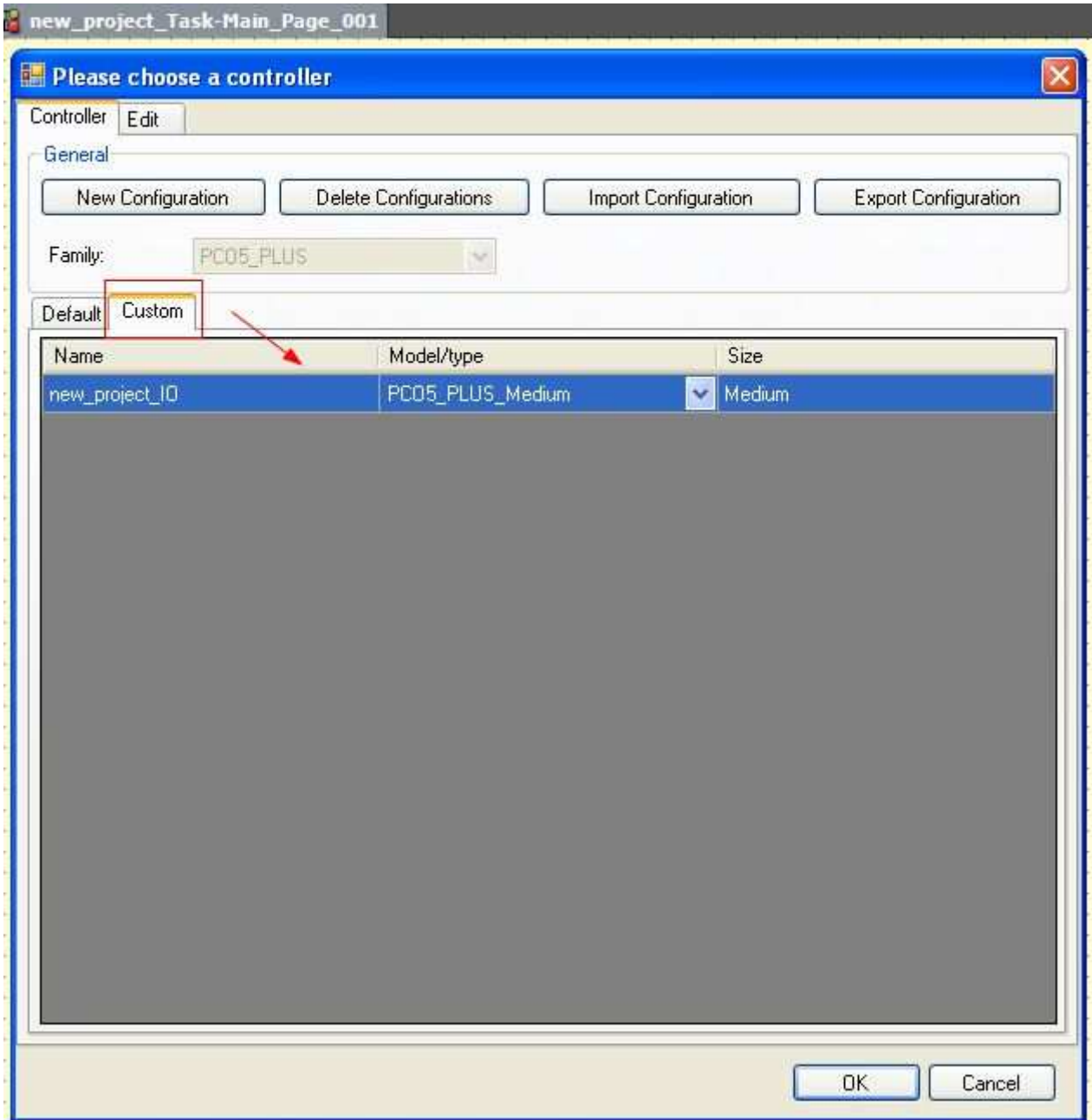


Fig. 7

For support and further information contact 1tool Customer Care (1tool@carel.com)

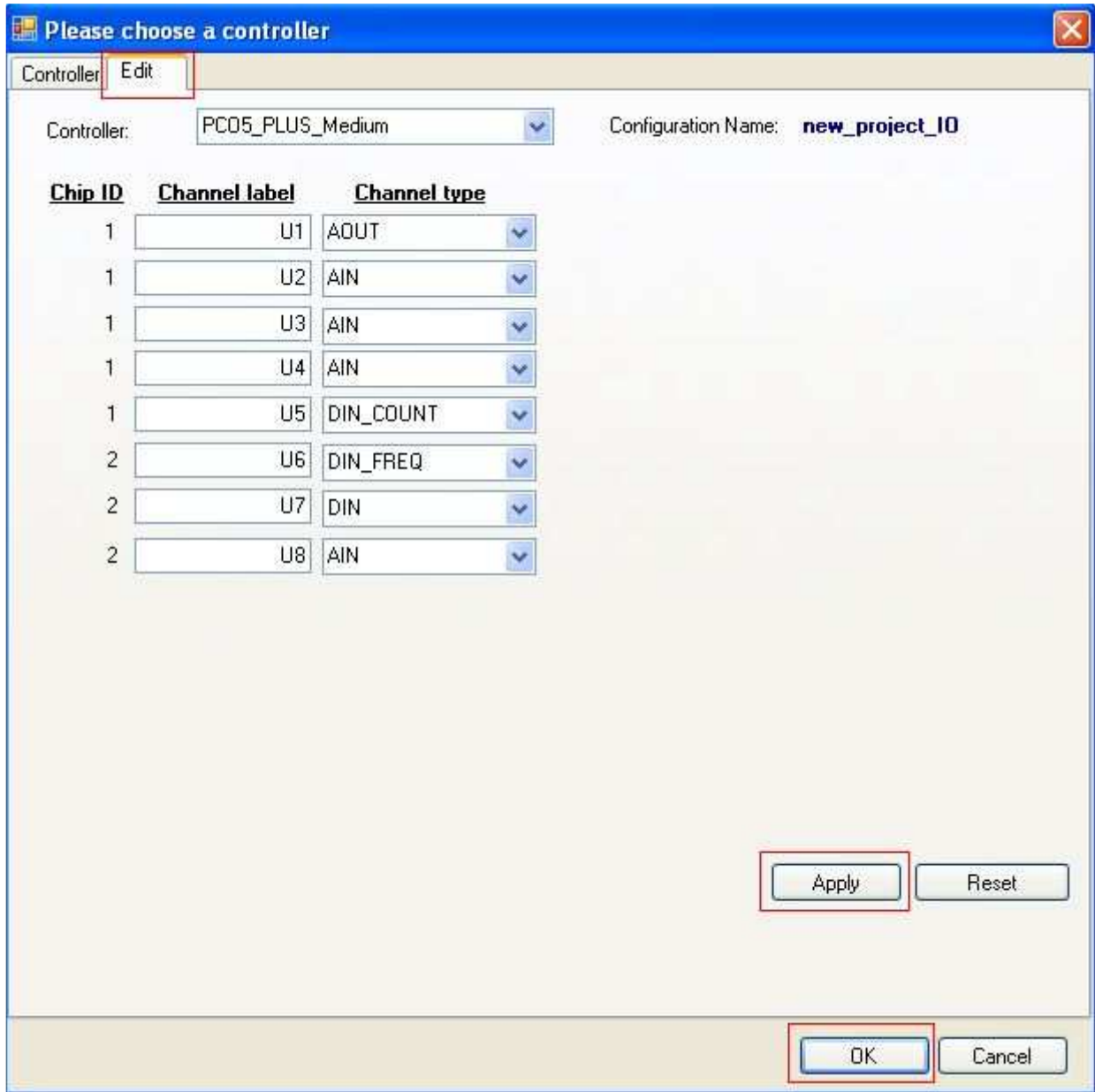


Fig. 8

5. Simulate

Now the user can simulate with the correct settings for all the customizable I/Os. To check this, please start the simulation and press again the I/O red-boxed button in Fig. 9.

For support and further information contact *1tool* Customer Care (1tool@carel.com)

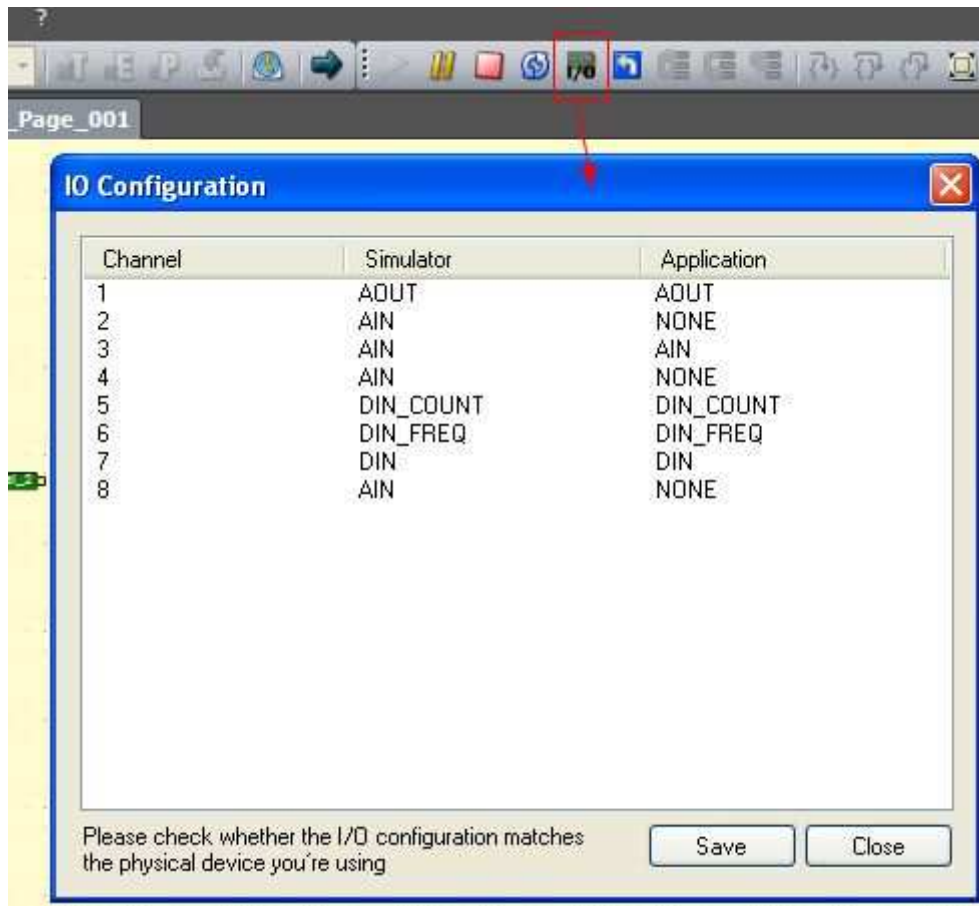


Fig. 9

Scenario 2

User knows the setting of his application and wants to set every channel manually. Starting from the step 2 of the first scenario, when 1tool shows the windows in Fig.4, the user can add a new configuration and by clicking the tab Edit he can set all the I/O configurations. Fig.10 shows the operation that user have to do to create a new I/O configuration. Fig.11 shows the Edit window.

For support and further information contact *1tool Customer Care* (1tool@carel.com)



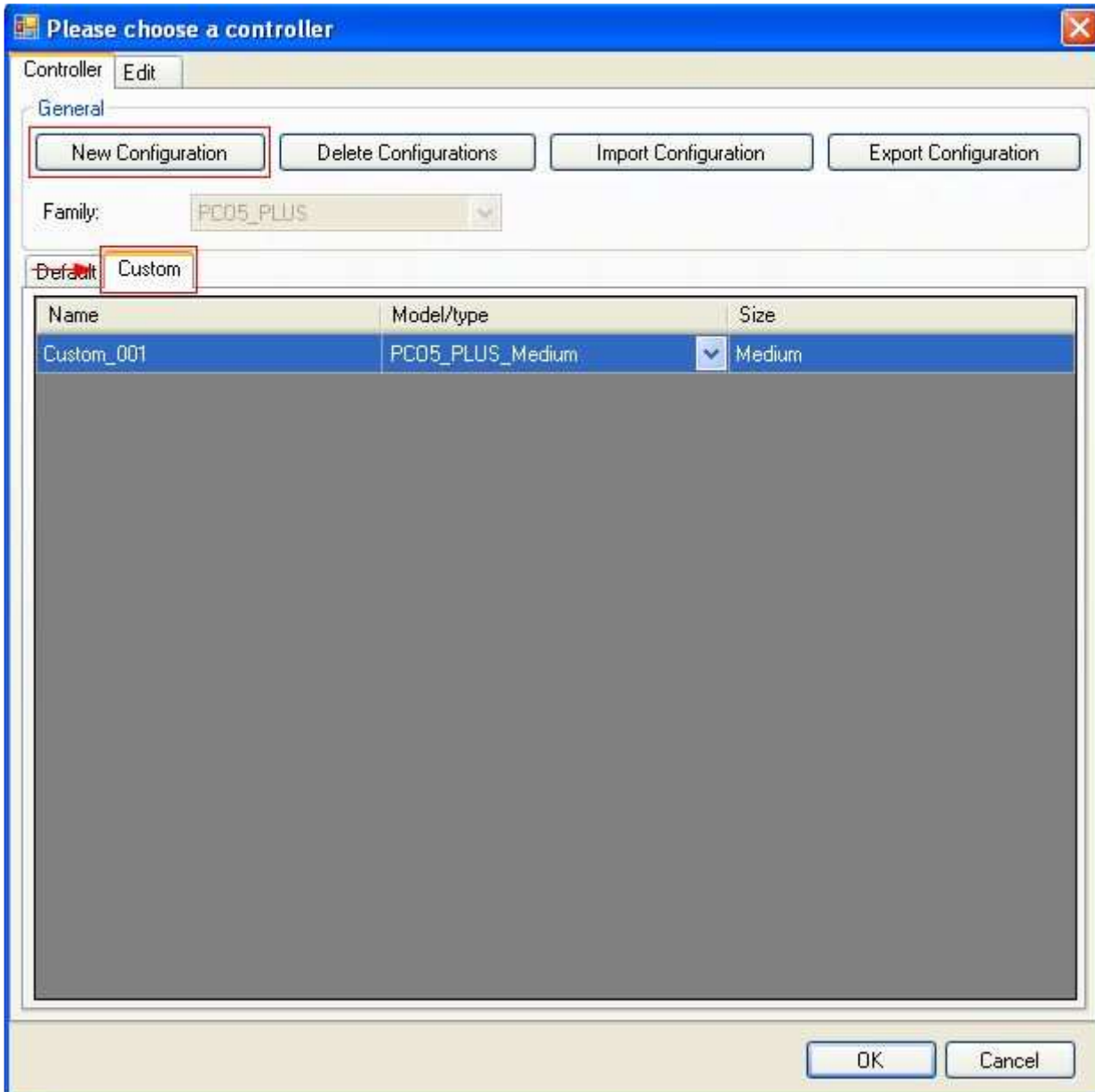


Fig. 10

For support and further information contact *1tool* Customer Care (1tool@carel.com)

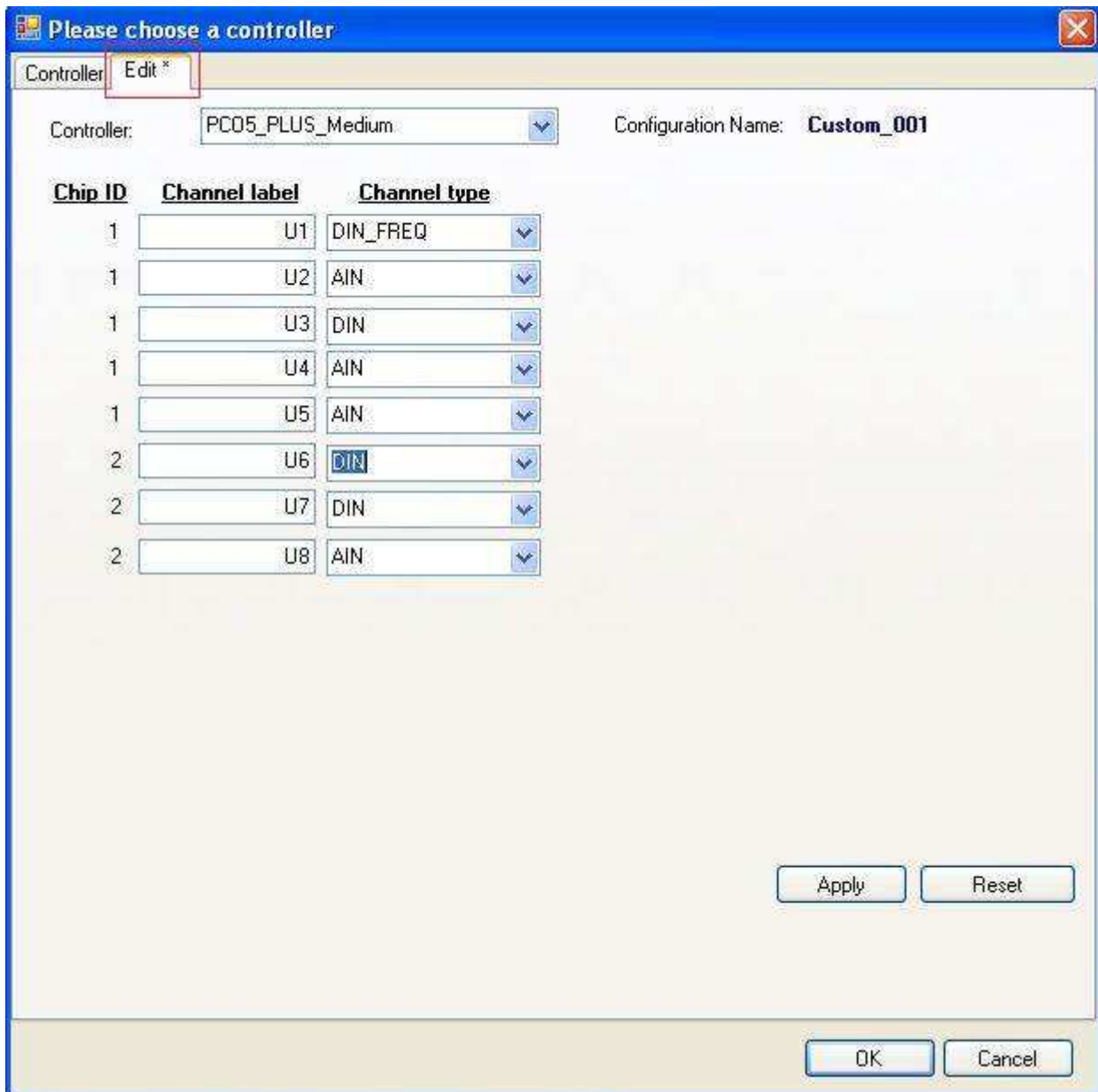


Fig. 11

Important Note:

In Fig. 5 and in Fig.9 there is the following message: **"Please check whether the I/O configuration matches the physical device you're using"**.

There are some strict conditions about the I/O configuration, please check them in the manual of the pCO controller.

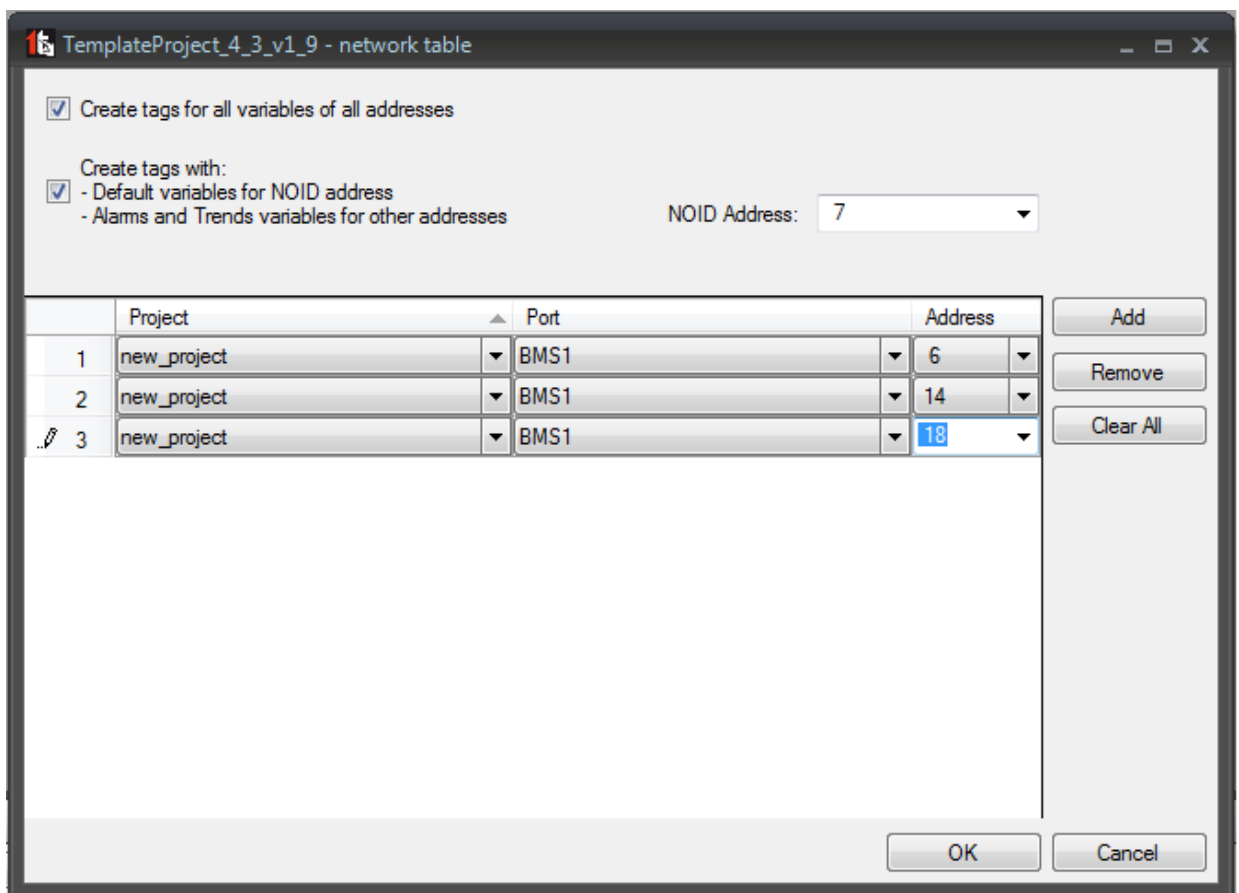
For support and further information contact 1tool Customer Care (1tool@carel.com)





- o **1toolTE projects integration:**

- o Modified the Network Table configuration form, and the underlying Model Data Converter tool, to manage the possibility, for the user, to generate both the kind of available csv files (using "Node Override ID" technique or with "all the variables expanded"), through a checkbox, as shown in the screenshot below.



For support and further information contact 1tool Customer Care (1tool@carel.com)





○ Commissioning:

- Support for new device pCO5+
- Support commissioning on the BMS2 (for pCO Compact, pCO5, pCO5+)

○ The 1tool **crash reporting system** has been enhanced; now the crash report message also includes the log files and the system information generated at the time of the crash. The system information includes:

- Your PC configuration: memory, CPU, operating system, graphic card, etc.
- Your user account settings: pc name, user name, domain, user rights
- Running processes at the time of the crash

Since the amount of data to send is bigger, the report sending process will last a few seconds more than the version in 2.5.16

As in the previous version, the report transmission is not automatic: if you don't wish to send us that information, you can simply skip the procedure by clicking the "Don't send" button.

Note: no data belonging to your projects is ever sent.

Minor enhancements

○ ST language:

- (Carel_Ref# 9048) The following ST functions now accept any input value without returning error:
 - SET_COM_BAUDRATE_PLAN,
 - SET_COM_BAUDRATE_FIELDDBUS2,
 - SET_COM_BAUDRATE_FIELDDBUS,
 - SET_COM_BAUDRATE_BMS2,
 - SET_COM_BAUDRATE_BMS,
 - SET_COM_PROTOCOL_BMS,
 - SET_COM_PROTOCOL_BMS2,
 - SET_COM_PROTOCOL_FIELDDBUS,
 - SET_COM_PROTOCOL_FIELDDBUS2,
 - SET_COM_PROTOCOL_PLAN

Fixed bugs

○ Solution tree:

- (Carel_Ref# 9003) Fixed: worksheet print problem from solution tree
- (Carel_Ref# 8982) Fixed: "Missing Strategy pages makes 1tool crash"

For support and further information contact *1tool Customer Care* (1tool@carel.com)





- (Carel_Ref# 8910) Fixed: A template solution can be created over another solution
- (Carel_Ref# 9157) Fixed: Rename page checking doesn't work on Solution Explorer. The special characters (like spaces and brackets) were not filtered when renaming a page through the contextual menu.
- **Strategy Editor :**
 - (Carel_Ref# 8909) Fixed: Same name of constants when connecting unconnected pins for a module
 - (Carel_Ref# 8879) Fixed: Minor issue when removing/adding breakpoint on ST_Call
- **Mask Editor:**
 - (Carel_Ref# 9090) Fixed: 1tool crashes when the user makes two successive operations: first of all copies and pastes a mask, then switches to the Strategy Editor and, from the Variable Wizard, copies a variable name and try to paste it inside the Variable Wizard filter box after switching the context to the Interface Editor plugin.
 - (Carel_Ref# 9047) Fixed: 1tool crashes when the user tries and copy a mask, then deletes the project which that mask belongs to, and tries to paste that mask into another project.
 - (Carel_Ref# 9167) Fixed: 1tool crashes when you cut a mask, delete its own worksheet and paste that mask into another worksheet
 - (Carel_Ref# 9078) Fixed: 1tool crashes after paste mask (Cut - deleteMask - Paste)
 - (Carel_Ref# 9329) Fixed: Import/Export translations fails with special field with an empty field.
- **Simulator**
 - (Carel_Ref# 9012) Fixed: 1tool crash during the simulation
 - (Carel_Ref# 8937) Fixed: double "F10" was required after breakpoint
 - (Carel_Ref# 6966) Fixed: Breakpoints not working using ST in module
 - [Carel_Ref# 9343] Fixed: Simulator is not backward compatible with pco5+
- **Net Editor**
 - (Carel_Ref# 8951) Fixed: output message for 'missing target to a plan link' error
 - (Carel_Ref# 9205) Fixed: cannot import a pPlan link between integer and analog variables
- **Commissioning**
 - (Carel_Ref# 9319) Fixed: 2cf not refreshed after compiling
 - Fixed: frequent disconnections during commissioning
 - Fixed: DEV not uploaded into pCO5
- **Variable Management**
 - (Carel_Ref# 8936) Fixed: Variant variables management
- **Compilation**
 - (Carel_Ref# 8992) Fixed: error in the External Compiler compiling "Simulator only"

For support and further information contact *1tool Customer Care* (1tool@carel.com)





- (Carel_Ref# 9028) Fixed: if a project doesn't compile, don't try to compile the network
- (Carel_Ref# 9040) Fixed: 1tool can't show all project's error messages
- **Framework**
 - (Carel_Ref# 9001) Fixed: Plugin Bar is active even if no solution is loaded

Note about Libraries: this 1tool version doesn't contain new standard Libraries

For support and further information contact *1tool Customer Care* (1tool@carel.com)

